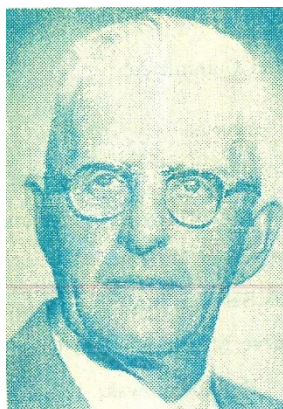


# Frederick John Schwab

## 25<sup>th</sup> State Deputy of Oregon 1956-1958



Frederick John Schwab was born October 27, 1893 in Mount Angel, OR to John and Mary Walleman Schwab on the family farm.

Fred married Bertha Ann Von Hatten in 1913. A year later Fred joined the newly formed Knights of Columbus Mount Angel Council in 1914. They had four children: Dorothy, Eleanor, Ralph and Arthur.

Eleanor died as a baby in 1927 and Ralph died in 1939.

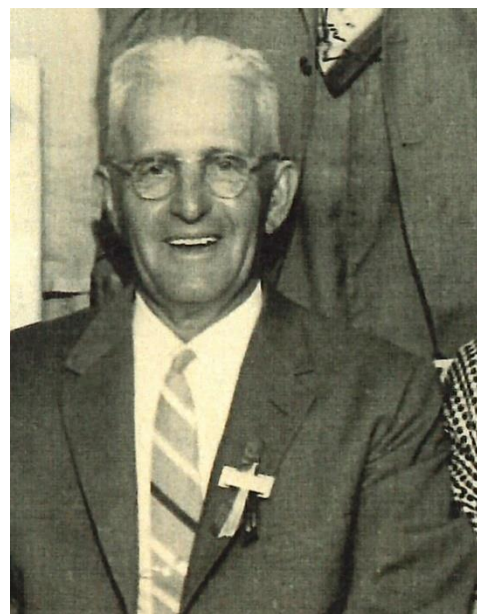
Fred was a manager of the Mt. Angel Flax Plant Growers Association from 1936 to 1951 and Vice President of the Bank of Mount Angel. He served on school boards from 1921 to 1979 and for many years was fire district and Farm Bureau board member.

Named top education citizen in 1962

Fred Held every office in the Mount Angel Council including Grand Knight. He was elected as State Deputy in 1956 but never held any other State Office.

Fred worked the family farm in Mount Angel until two until two years before his death.

Frederick J. Schwab died March 17, 1980 and is buried at Calvary Cemetery in Mount Angel, OR. Bertha died in 1984 and is buried next to Fred.



*"Our Councils are the most important part of the Knights of Columbus because without them we could not have a State Council, or a Supreme Council. Let us not forget that we are the most powerful organization in our history for the good of humanity, both spiritual and charitable - and never pagan."*

*Fred Schwab, November, 1957, Salem, OR*

